

## LCD Module – 190



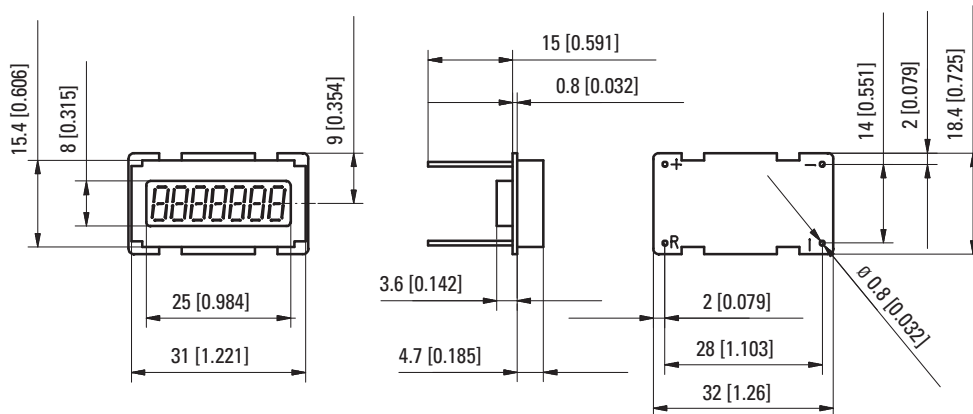
- Counting frequency up to 10 kHz
- 7-digit display, height 6 mm [0.236"]
- Non-volatile memory (no battery, EEPROM)
- High reliability
- Low operating current
- Wide operating voltage and temperature range
- Very high shock and vibration resistance

### Technical data:

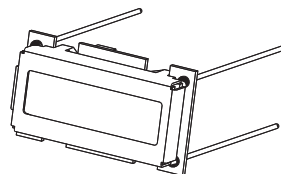
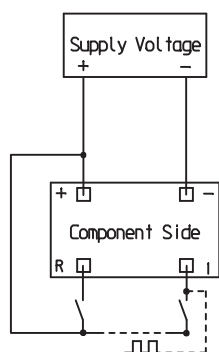
Supply:	1. 4.75 ... 15 V DC 2. 9 ... 60 V DC reverse polarity protection
Current consumption:	1. 8 mA at 4.75 ... 15 V DC 2. 6 mA at 9 ... 60 V DC
Count and reset input:	high 4 ... 60 V DC, low: 0 ... 0,7 V DC
Max. count frequency:	10 kHz (edge triggered)
Display:	7-digit display, figure height 6 mm [0.236"]
Data backup:	EEPROM
Colour:	black
Working temperature:	-20 ... +80 °C [-4 ... 185 °F] non-condensing
Operating temperature:	-40 ... +80 °C [-40 ... 176 °F]
Storage temperature:	-50 ... +90 °C [-58 ... 194 °F]

EMC:	Emitted interference EN55011 Class B Immunity to interference: EN61000-6-2
Weight:	approx. 8 g [0.282 oz]
Memory capacity:	CMOS EEPROM. non-volatile memory has data retention in excess of 10 years.
Shock resistance acc. to DIN-IEC 68-2-27:	550 m/s <sup>2</sup> , 11 ms
Vibration resistance acc. to DIN-IEC 68-2-6:	50 ... 200 m/s <sup>2</sup> , 10 ... 80 Hz
Needs protection from:	inductive stress peaks, high energy noise, fields switching, alternator load dump

### Dimensions:



### Connecting diagram:



### Order code:

LCD count module type 190:	
4.75 ... 15 V DC	Order-No.: 6.190.012.F00 Art-No.: 162 135
9 ... 60 V DC	Order-No.: 6.190.012.G00 Art-No.: 162 136

### Delivery specifications:

- LCD Counter Module Type 190
- Operating instructions