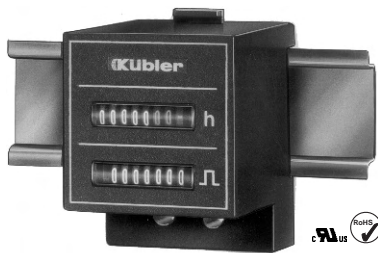


## Counters with dual function – SHC 77



- **Combination counter consists of time meter and totalising counter in one**
- Without reset
- Competitively priced
- High shock resistance
- Magnified figures
- Protection IP 52 front side
- Data retention if power is lost
- Long service life
- UL-approval

### Applications:

general counting, alarm systems, slot machines, pay stations, electricity meters, copying machines, medical equipment, car washes.

### Technical data:

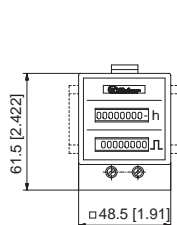
Electrical connection:	SHC 77:	screw terminal tightening torque max. 0,8 Nm
	SHC 77.60:	2 x cable 2 x 0.5 mm <sup>2</sup> NYFAZ, 0.5 m [0.547 square yards] long hour meter red/black adding counter grey
Power consumption:	10 ... 30 V DC:	approx. 1 W
	36 ... 80 V DC:	approx. 1.65 W
	100 ... 130 V DC:	approx. 1.75 W
	20 ... 30 V AC, 50 Hz:	approx. 0.53 VA
	42 ... 48 V AC, 50 Hz:	approx. 0.53 VA
	100 ... 130 V AC, 50 Hz:	approx. 1.43 VA
Rated voltages:	20 ... 30/42 ... 48/100 ... 130/187 ... 264 V AC	
	50 or 60 Hz, 10 ... 30/36 ... 80/100 ... 130 V DC	
	On time:	100 %
Count mode:	adding	
Height of figures:	4 x 1.7 mm [0.158 x 0.067"]	
Colour of figures:	hour meter:	
	Hours: white figures on black	
	1/10 and 1/100 h: red figures on black	
	adding counter:	white figures on black
Operating indicator of the hour meter:		
AC:	fast rotating wheels with red dashes: 99999.9 h	
DC:	1/100 h display turns continuously by 1 digit per 36 s: 999999.9 h	

Accuracy:	AC: Supply frequency + 30 ms DC: < 0.003 % (24 h)
Reset:	no
Ambient temperature:	-15 ... +50 °C [5 ... 122 °F]
Mounting position:	any
Protection:	IP 52 (from front, when built-in)
Colour of housing:	black
Weights:	SHC 77            85 g [2.998 oz]
	SHC 77.60       105 g [3.704 oz]
Options:	
SHC 77	The two meters are connected in parallel, this means, that the adding counter registers the total number of events and the time meter the total operating time of the device.
SHC 77.60	Hour meter and adding counter have two separate connections. This version is available for either AC or DC version (not mixed)
Applications:	switch cabinets, distribution boxes etc.
Test voltage:	2500V AC, 50 Hz
Order information:	Art. no. (for special voltages etc. exact type, voltage, frequency e.g. SHC 77, 120 V AC, 60 Hz)
Approvals:	UL for USA and Canada E128604

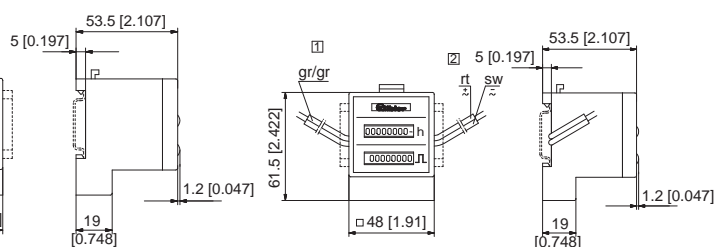
Figure.: SHC 77



SHC 77



SHC 77.60



1 Totalising counter    2 Hour meter

### SHC 77

Voltage	Art-No. (AC), 50 Hz	Art-No. (AC), 60 Hz	Art-No. (V DC)
10 ... 30			3.553.401.351
20 ... 30	3.553.401.071	3.553.401.081	
42 ... 48	3.553.401.072	3.553.401.082	
100 ... 130	3.553.401.074	3.553.401.084	3.553.401.381
187 ... 264	3.553.401.075	3.553.401.085	

### SHC 77.60 (separate connections)

Voltage	Art-No. (AC), 50 Hz	Art-No. (AC), 60 Hz	Art-No. (V DC)
10 ... 30			3.553.401.351.060
20 ... 30	3.553.401.071.060	3.553.401.081.060	
42 ... 48	3.553.401.072.060	3.553.401.082.060	
100 ... 130	3.553.401.074.060	3.553.401.084.060	3.553.401.381.060
187 ... 264	3.553.401.075.060	3.553.401.085.060	